



RA-25

Gearhead Motor Series (Spur gear)

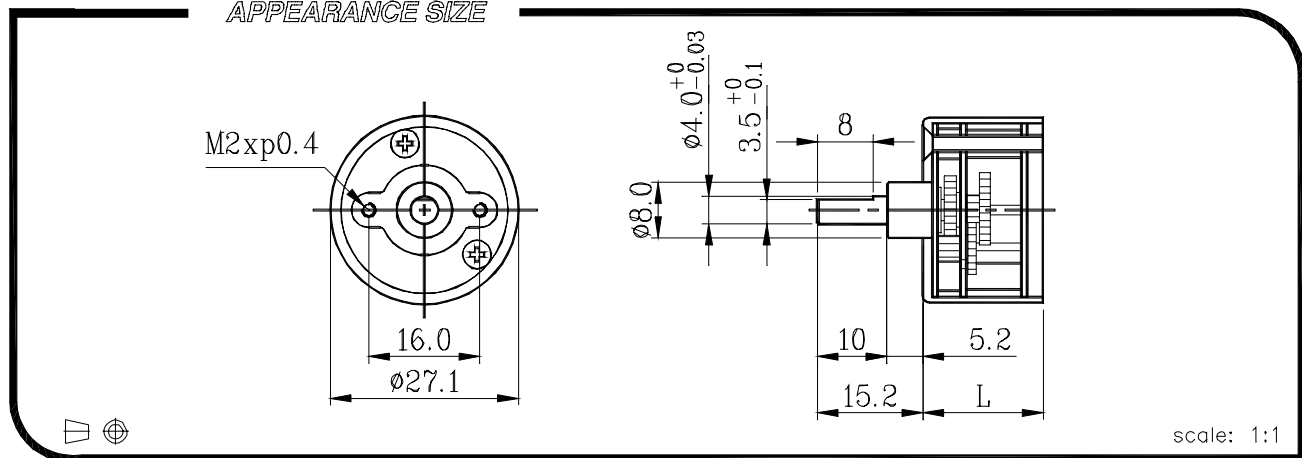
Gearbox with sleeve bearings



20%~85%RH
Operating relative humidity

-10~+60
Operating temperature range

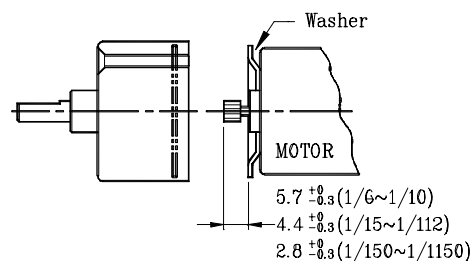
APPEARANCE SIZE



PINION SPECIFICATIONS

Module	0.3	
No. of teeth	12	11
Pressure angle	20	
Hole diameter	$\phi 1.98$	
Reduction ratio	1/6, 1/21, 1/100, 1/170, 1/200 1/250, 1/320, 1/400, 1/500 1/700, 1/800	1/10, 1/15, 1/30, 1/44, 1/60, 1/77, 1/112, 1/150, 1/360, 1/900, 1/1150

MOTOR INSTALLATION



GEARBOX SPECIFICATIONS

Reduction ratio	Rated tolerance torque	Max momentary Tolerance torque	Efficiency	Radial play Of shaft	Thrusts play of shaft	L	L
1/6, 1/10	6 1/4, 10	0.3kgf - cm Max	0.9 kgf - cm	81%	0.05mm	0.35mm	17.3
1/15, 1/21	15, 21 1/3	0.4kgf - cm Max	1.2 kgf - cm	73%	↑	↑	↑
1/30, 1/44	30, 44	0.6kgf - cm Max	1.8 kgf - cm	65%	↑	↑	↑
1/60, 1/77	60, 76 4/5	0.8kgf - cm Max	2.4 kgf - cm	65%	↑	↑	↑
1/100, 1/112	100 28/225, 112 16/25	1.0kgf - cm Max	3.0 kgf - cm	65%	↑	↑	↑
1/150, 1/170	153 3/5, 170 2/3	1.2kgf - cm Max	3.6 kgf - cm	50%	↑	↑	↑
1/200, 1/250	200 56/225, 250 14/45	1.2kgf - cm Max	3.6 kgf - cm	50%	↑	↑	↑
1/320, 1/360	320 448/1125, 360 56/125	1.2kgf - cm Max	3.6 kgf - cm	50%	↑	↑	↑
1/400, 1/500	400 112/225, 500 28/45	1.5kgf - cm Max	4.5 kgf - cm	40%	↑	↑	19.3
1/700, 1/800	699 19/375, 800 224/225	1.5kgf - cm Max	4.5 kgf - cm	40%	↑	↑	19.3
1/900, 1/1153	901 3/25, 1153 271/625	1.5kgf - cm Max	4.5 kgf - cm	40%	↑	↑	19.3